

# VYKING FORCE

## INSTRUCTION MANUAL

---



### PRESSURE WASHER VF1450B

To prevent serious injury, read and understand all warnings and instructions before use. Keep these instructions safe for future use.

## CONTENTS

<u>Key features</u>	<u>3</u>
<u>Safety instructions</u>	<u>3</u>
<u>Proper use</u>	<u>9</u>
<u>Description of appliance</u>	<u>9</u>
<u>Technical specifications</u>	<u>10</u>
<u>Assembly</u>	<u>10</u>
<u>Start up</u>	<u>13</u>
<u>Operation</u>	<u>14</u>
<u>Transportation</u>	<u>16</u>
<u>Storage</u>	<u>17</u>
<u>Care and maintenance</u>	<u>18</u>
<u>Troubleshooting</u>	<u>20</u>
<u>Accessories</u>	<u>22</u>
<u>Warranty</u>	<u>22</u>

## **KEY FEATURES**

- MAX PRESSURE: 1450PSI / 10 Mpa
- MAX FLOW RATE: 6.2 L/MIN
- MOTOR: 1400 WATT
- HOSE: 5 M
- WARRANTY: 2 YEAR

## **IMPORTANT SAFETY INSTRUCTIONS**

### **SAVE THESE INSTRUCTIONS**

Please read and comply with these instructions prior to the initial operation of your appliance and store them for later use or subsequent owners.

Apart from the notes contained herein, general safety provisions and rules for the prevention of accidents must be observed.

Warnings and notes that are attached to the appliance provide important information for safe operation.

### **Hazard levels**

#### **DANGER**

Pointer to immediate danger, which if not avoided, leads to severe injuries or death.

#### **WARNING**

Pointer to a possibly dangerous situation, which if not avoided, can lead to severe injuries or death.

#### **CAUTION**

Pointer to a possibly dangerous situation, which if not avoided, can lead to minor injuries.

#### **ATTENTION**

Pointer to a possibly dangerous situation, which can lead to property damage.

#### **WARNING**

Depending on the application, shielded nozzles can be used for high pressure cleaning, which will reduce the emission of hydrous aerosols dramatically. However, not all applications allow the use of such a device. If shielded nozzles are not applicable for the protection against aerosols, a respiratory mask of class FFP 2 or equivalent may be needed, depending on the cleaning environment.



## Electric components

### **⚠DANGER**

Risk of electric shock.

Never touch the mains plug and the socket with wet hands.

Check the power cord with mains plug for damage prior to every use. Do not use the machine if a supply cord or important parts of the machine are damaged, e.g. safety devices, high pressure hoses, trigger gun.

All current-conducting parts in the working area must be protected against jet water.

The mains plug and the coupling of an extension cable must be watertight and must never lie in water. Furthermore, the coupling may never lie on the ground. The use of cable reels that ensure that the sockets are at least 60 mm above the ground is recommended.

Make sure that the power cord or extension cable is not damaged by running over, pinching, dragging or the like. Protect the power cords from heat, oil, and sharp edges.

Always turn off the mains switch when leaving the appliance unattended.

### **⚠WARNING**

The appliance must be plugged into the mains outlet. The voltage must correspond with the type plate of the appliance.

If the supply cord is damaged, it must be replaced by the manufacturer, its service agent or similarly qualified persons in order to avoid a hazard.

For safety reasons, we recommend that you operate the appliance only via a residual current device (max. 30mA).

An unsuitable electrical extension cable can be hazardous. Only use an electrical extension cable which has been approved and labeled for this purpose and has an adequate cable cross-section outdoors: 1 - 10 m: 1.5 mm<sup>2</sup>; 10 - 30 m: 2.5 mm<sup>2</sup>

Always fully unreel the extension cable from the cable drum.

An unsuitable electrical extension cable can be hazardous.

## Safe handling

### **⚠DANGER**

The user must use the appliance as intended. The person must consider the local conditions and must pay attention to other persons in the vicinity when working with the appliance.

Check important components, such as high-pressure hose, hand spray gun and safety installations, for damage prior to every operation. Immediately replace damaged

## PRESSURE WASHER 1450B

---

components. Do not operate appliance with damaged components.

High-pressure jets can be dangerous if subject to misuse. The jet must not be directed at persons, live electrical equipment or the machine itself.

Do not direct the jet against yourself or others in order to clean clothes or footwear.

Do not use the appliance within range of other people unless they are wearing protective clothing.

Wear appropriate Personal Protection Equipment (PPE) while operating the appliance.

### **⚠WARNING**

The appliance must not be operated by children or untrained personnel.

This appliance is not intended for use by persons (including children) with reduced physical, sensory or mental capacities, or lacking experience and knowledge.

Children must not play with this appliance.

Supervise children to prevent them from playing with the appliance.

Create stability for the appliance prior to any work on or with the appliance to prevent accidents or damage.

The water jet that is emitted from the high-pressure nozzle results in a repulsion power acting on the hand spray gun. Make sure that you have a firm footing and are also holding the hand spray gun and spray lance firmly.

Never leave the appliance unattended while in operation.

### **ATTENTION**

In case of extended breaks, switch the appliance off at the main switch or pull out the mains plug.

Do not operate the appliance at temperatures below 0°C

### **Other risks**

#### **⚠DANGER**

The appliance may not be operated in explosive atmospheres.

Risk of explosion - Do not spray flammable liquids.

Never draw in fluids containing solvents or undiluted acids and solvents! This includes petrol, paint thinner and heating oil. Do not use acetone, undiluted acids and solvents, as they corrode the materials used on the appliance.

Never use the product with inflammable or toxic liquids, or liquids with characteristics incompatible with its proper operation.



Keep plastic packaging away from children, there is a risk of suffocation!

### **⚠WARNING**

According to applicable regulations, the appliance must never be used on the drinking water net without a system separator. Ensure that the connection of your building water installation, on which the high-pressure washer is operated, is equipped with a system separator.

Water that has flown through backflow preventers is no longer considered to be safe to drink.

High-pressure hoses, fittings and couplings are important for the safety of the appliance. Only use high-pressure hoses, fittings and couplings recommended by the manufacturer.

Use only original spare parts from the manufacturer or approved by the manufacturer.

Switch the product off and disconnect it from the power supply removing the power plug from the socket outlet before assembly, cleaning, adjustments, maintenance, storage and transportation or converting the product to another function.

### **⚠CAUTION**

Mind the weight of the appliance when selecting the storage location and during transport to prevent accidents or injuries.

Several hours of continuous use of the appliance can lead to numbness in the hands in rare cases.

→Wear gloves.

→Keep hands warm.

→Take breaks at regular intervals.

### **⚠WARNING**

Working with detergent

The improper use of detergents can cause severe injuries or oxidation.

Store cleaning agents out of the reach of children.

Discharge residual pressure before disconnecting the hose from the product.

Check before each use, and at regular intervals, that all metal fasteners are tight, and the product components are in good condition; inspect for broken or worn parts.

Be aware of kick-back: HOLD WITH BOTH HANDS.

### **SERVICING OF A DOUBLE-INSULATED APPLIANCE**

In a double-insulated product, two systems of insulation are provided instead of grounding. Grounding means are not provided for a double- insulated product, nor

## PRESSURE WASHER 1450B

---

should grounding means be added to the product. Servicing a double-insulated product requires extreme care and knowledge of the system and should only be done by qualified service personnel. Replacement parts for a double-insulated product must be identical to the original parts. A double-insulated product is marked with the words "Double Insulation" or "Double Insulated".

### **Residual risks**

Even if you are operating this product in accordance with all the safety requirements, potential risks of injury and damage remain. The following dangers can arise in connection with the structure and design of this product:

Health defects resulting from vibration emission if the product is being used over long periods of time or not adequately managed and properly maintained.

Danger of injury and property damage caused by flying objects.

Injuries and damage to property due to broken accessories or the sudden impact of hidden objects during use.

### **Safety Devices**

#### **⚠CAUTION**

Safety installations serve to protect the user and may not be modified or bypassed.

#### **Power switch**

The appliance switch prevents unintentional operation of the appliance.

#### **Lock trigger gun**

This lock, locks the lever of the trigger gun and prevents the inadvertent start of the appliance.

#### **Overflow valve**

Water that has flowed through backflow preventers is considered to be unsafe to drink.

#### **Pressure switch**

If the lever on the trigger gun is released the pressure switch turns off the pump and the high-pressure jet is stopped. If the lever is pulled the pump is turned on again.

#### **Motor protection switch**

The motor protection switch will turn off the device if the power consumption is high.

## Personal protective equipment

### ⚠ CAUTION

Wear protective clothing and safety goggles to protect against splash back containing water or dirt.

During the use of high-pressure washers' aerosols can develop. Inhaling aerosols can cause health damage.

—Depending on the application, completely shielded nozzles (e.g. surface cleaner) that significantly reduce the emission of aqueous aerosols can be used for high-pressure cleaning.

—The use of such shielding is not possible with all applications.

## Symbols on the machine



The high-pressure jet must not be directed at persons, animals, live electrical equipment or at the appliance itself.



The appliance must not be directly connected to the public drinking water network.



For protection against injury, wear earmuffs and safety goggles.



Wear safety gloves during use to protect hands.



Wear non-slip footwear that will protect your feet and improve your footing on slippery surfaces.



Sound power level is 92dB



Class 2 product electrical protection



Australian Regulatory Compliance Mark (RCM)



## PRESSURE WASHER 1450B

### **PROPER USE**

Use this pressure washer for private households only.

If connection is made to a potable water system, the system shall be protected against backflow.

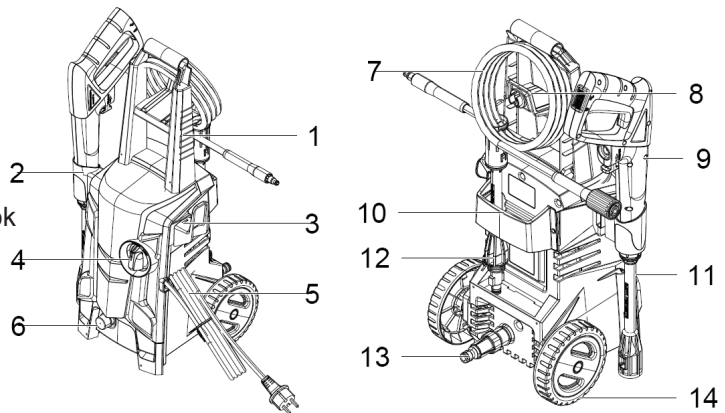
This high-pressure washer is designated with a rated input current. The intended use of this product covers the cleaning of vehicles, buildings, terraces, facades and garden equipment using clean water and biodegradable chemical detergents. Likewise, the product can be used to clean paving slabs or rain gutters.

This product may not be used to clean clothing, shoes and other textiles. The water jet should not be directed against persons, animals, any electrical equipment or the product itself. Do not flush any objects which contain health hazardous materials. The product must not be run with inflammable, explosive or toxic liquids.

For safety reasons it is essential to read the entire instruction manual before first operation and to observe all the instructions therein.

### **DESCRIPTION OF THE APPLIANCE**

1. Handle
2. Trigger gun holder
3. Power cord hook
4. Adjust switch OFF/ON
5. Power cord
6. Water outlet
7. High pressure hose
8. High pressure hose hook
9. Trigger gun
10. Lance holder
11. Mid lance
12. Variable lance
13. Water inlet
14. Wheel





## TECHNICAL SPECIFICATIONS

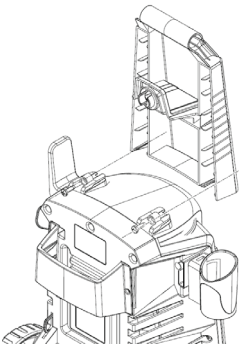
Model	VF1450B
Voltage	220 - 240V~ 50Hz
Power	1400 WATT
Max Pressure	1450 PSI / 10 Mpa
Max Flow Rate	6.2 L/MIN
Hose Length	5 M
Max Inlet Water Pressure	101 PSI / 0.7 Mpa
Cable Length	5 M
Motor Type	CARBON BRUSH
Pump Material	ALUMINIUM
Product Dimensions (LxWxH)	307 x 259 x 587mm
Net Weight	5.3 KG
Max. Noise Level	92 dB

## ASSEMBLY

### ASSEMBLY

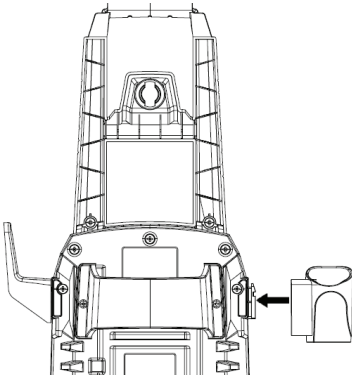
Mount loose parts delivered with appliance prior to start-up

#### **1. Install the handle with screws provided**

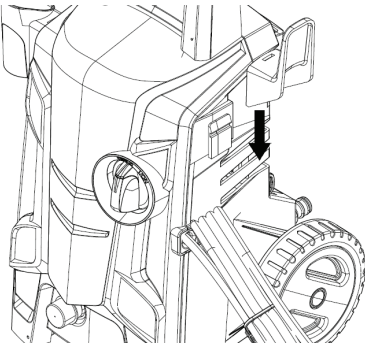


## PRESSURE WASHER 1450B

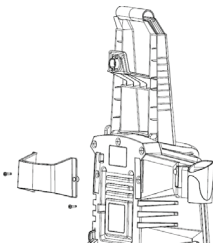
**2. Slide the trigger gun holder into position on right of unit**



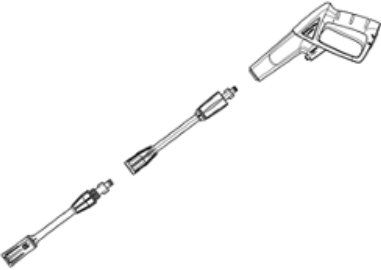
**3. Slide the power cord hook into position on left of unit**



**4. Install the Spray wand holder with screws provided**



## 5. Install the lance



Fit the mid lance into the gun and rotate it until the two parts are completely locked. Then do the same for the variable lance

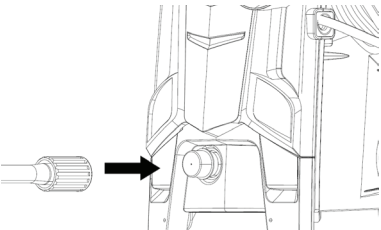
## 6. Connect the high-pressure hose to the trigger gun



Connect the silver end of the high-pressure hose to the trigger gun and twist the nut as indicated to secure the connection.

## 7. Connect the high-pressure hose to the water outlet

Connect the other end of the high-pressure hose to the water outlet on the washer and twist the black rotatable end-piece as indicated to secure the connection.

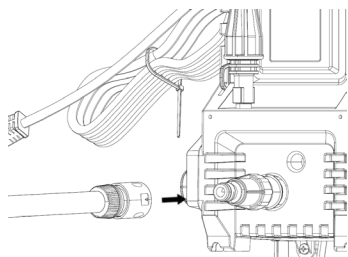


## PRESSURE WASHER 1450B

---

### 8. Connect the garden hose to the water inlet

Connect the garden hose adaptor (female coupler) to the water inlet of the pressure washer, and then thread your garden hose (male end) into the garden hose adaptor.



### **START UP**

Park the appliance on an even surface. Insert the mains plug into the socket.

### **Water supply**

#### **ATTENTION**

Impurities in the water can damage the high-pressure pump and the accessories.

Supply water from mains outlet.

DO NOT draw in water from open reservoirs.

This high-pressure washer is suited to work with a suction hose with backflow valve to draw in surface water, e.g. from water tanks or ponds.

Fill the suction hose with water.

Screw the suction hose into the water connection of the appliance and insert it into the water source (e.g. rainwater drum).

Bleed the device as follows prior to operation:

- Turn on the appliance using the “OFF/ON” switch.
- Unlock the lever of the trigger gun.
- Push the lever of the trigger gun, the device will switch on.
- Let the device run (max. 2 minutes) until the water exits the trigger gun without bubbles.
- Release the lever of the trigger gun.
- Lock the lever of the trigger gun.

## **OPERATION**

### **ATTENTION**

Dry running of more than 2 minutes leads to damage of the high-pressure pump. If the appliance does not build up pressure within 2 minutes, switch the appliance off and proceed in accordance with the instructions in "Troubleshooting".

### **High pressure operation**

#### **⚠ CAUTION**

Keep a distance of at least 30 cm when using the jet for cleaning painted surfaces to avoid damage.

#### **⚠ CAUTION**

Make sure the on/off switch is set to "OFF" position and insert the plug into a properly installed socket.

### **ATTENTION**

- The washer must be used on a secure and stable surface in a standing, upright position



Connect the product to power and water supply as described.

- Open the water supply.
- Hold the spray gun with both hands.
- Direct the nozzle of the chosen accessory away from you towards the surface to be cleaned.
- Unlock the trigger and press it until a constant amount of water flows through the nozzle, to allow air trapped in the hose to escape.

## PRESSURE WASHER 1450B

---

- Release the trigger.
- Turn on the switch “OFF/ON”.
- Hold the spray gun with both hands. Direct the water jet to the object to be cleaned and press the trigger.

Release the lever of the trigger gun; the device will switch off again and stop the water jet. High pressure remains in the system.

**⚠WARNING! Beware of kickback when pressing the trigger!**

### **Recommended cleaning method**

- Spray the detergent sparingly on the dry surface and allow it to react, but not to dry.
- Spray off loosened dirt with the high-pressure jet.

### **After operation with detergent**

- Remove the hose, clean detergent from the intake and close it with the lid.
- For storage, put the detergent bottle into the retainer with the cap pointing up.

### **Interrupting operation**

- Release the lever of the trigger gun.
- Lock the lever of the trigger gun.
- Put the trigger gun with the spray lance into the parking position.
- During longer breaks (more than 5 minutes), also turn the appliance off using the “OFF/ON” switch.

### **Finish operation**

- Release the lever of the trigger gun.
- Turn off the appliance using the “OFF/ON” switch.
- Disconnect the mains plug from the socket.
- Separate the high-pressure hose from the trigger gun or the device when there is no pressure in the system.

TURN OFF TAP



- Press the lever of the trigger gun to release any remaining pressure in the system.
- Release the lever of the trigger gun.
- Lock the lever of the trigger gun.

### **ATTENTION**

- When disconnecting the supply or high-pressure hose, warm water may leak from the connection after operation.
- Detach the appliance from the water supply.

## **TRANSPORTATION**

### **⚠ CAUTION**

Risk of personal injury or damage!

Mind the weight of the appliance during transport.

### **When transporting by hand**

- Switch the product off and disconnect it from the water and power supply.
- Pull out the transport handle until it audibly snaps into place. Attach transportation guards, if applicable.
- Pull the appliance by its transport handle.

### **When transporting in vehicles**

- Prior to horizontal transport: close the cap of clean detergent bottle.
- Tilt the product towards you until it balances on the wheels. Then move it by its transportation handle.
- Protect the product from any heavy impact or strong vibrations which may occur during transportation in vehicles.
- Secure the appliance against shifting and tipping over.

## **STORAGE**

### **⚠ CAUTION**

Risk of personal injury or damage!



## PRESSURE WASHER 1450B

---

Consider the weight of the appliance when storing it.

### Storing the appliance

- Park the machine on an even surface.
- Detach spray lance from the trigger gun.
- Push the disconnect button on the trigger gun to disconnect the high pressure hose.
- Place trigger gun into gun storage.
- Put spray lance into accessory storage.
- Coil the high pressure hose and hang it over the hose hook.
- Store the mains connection in the accessory compartment.
- Prior to extended storage periods, as during the winter, also observe the instructions in the care section.
- Always store the pressure washer, parts, and accessories in a place that is inaccessible to children. The ideal storage temperature is between 10 °C and 30 °C. Store the power washer indoors to prevent the water in the unit from expanding under freezing conditions.
- We recommend using the original package for storage or covering the product with a suitable cloth or enclosure to protect it against dust.

### Frost protection

#### ATTENTION

Appliance and accessories that are not completely drained can be destroyed by frost.

Completely drain appliance and accessories and protect them against frost. To avoid damage:

- Detach the appliance from the water supply.
- Detach spray lance from the trigger gun.
- Turn on the appliance “ON/OFF” switch.
- Push the lever of the trigger gun until no more water escapes.
- Release the lever of the trigger gun.
- Lock the lever of the trigger gun.
- Turn off the appliance “ON/OFF” switch.

- Store the appliance and all accessories in a frost-free room.

## **CARE AND MAINTENANCE**

### **⚠ DANGER**

Risk of electric shock

Prior to all work on the appliance, switch off the appliance and unplug from the mains outlet.

### **High pressure hose**

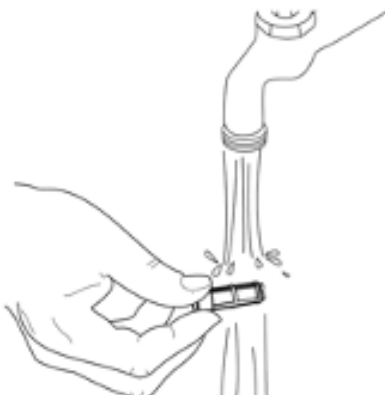
The high-pressure hose is specially constructed with reinforced walls; it can be easily damaged and should be stored carefully.

- Do not kink.
- Do not drive vehicles over the hose.
- Do not expose the hose to sharp edges or corners. Misuse will lead to ballooning or premature failure and will invalidate warranty.

### **Clean the sieve in the water connection**

Clean the sieve in the water connection regularly.

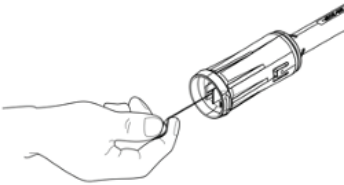
Remove coupling from the water connection, and rinse with warm water to prevent any foreign matter from clogging the pump.



## PRESSURE WASHER 1450B

---

Clean the nozzle with the needle cleaning tool provided. Remove the spray wand from the gun. Remove any dirt from the nozzle hole and rinse.



### **ATTENTION**

- The cleaning tool must not be damaged.
- If it becomes stuck pull the cleaning tool out using flat pliers.



---

## **TROUBLESHOOTING**

**DANGER** Risk of electric shock.

Turn off the appliance and remove the main plug prior to performing any care and maintenance work. Repair work and work on the electrical components may only be performed by an authorized agent or electrician. You can rectify minor faults yourself with the help of the following overview. If in doubt, please consult an authorized agent or electrician.

---

 PRESSURE WASHER 1450B
 

---

Symptom	Cause	Reccomended Action
Machine refuses to start	Machine not plugged in Defective socket Fuse has blown Defective extension cord	Plug in machine Try another socket Replace fuse. Switch off other machines. Try without the extension cord
Fluctuating pressure	Pump sucking air Valves dirty, worn out or stuck Pump seals worn out	Check that hoses and connections are airtight Clean and replace or refer to local distributor Clean and replace or refer to local distributor
Machine stops	Incorrect mains voltage Thermal sensor activated Nozzle partially blocked	Check that the mains voltage corresponds to specification on the model tag Leave the washer for 5 minutes to cool down Clean the nozzle
Machine pulsating	Air in inlet hose Inadequate supply of mains water Nozzle partially blocked Water filter blocked Hose kinked	Allow machine to run with open trigger until regular working pressure resumes Check that the water supply corresponds to specifications required NB! Avoid using long, thin hoses (min. 1/2") Clean the nozzle Clean the filter Straighten out hose
Machine starts, but no water comes out	Pump/hoses or accessory frozen No water supply Water filter blocked /Nozzle blocked	Wait for pump/hoses or accessory to thaw Connect inlet water Clean the filter /Clean the nozzle



## ACCESSORIES

A range of accessories are supplied for this product. Please check the technical specification of any accessories that you purchase to ensure they are compatible with this product.

## WARRANTY

Thank you for purchasing this Vyking Force product. This warranty is provided by Automotive Brands Group of 76-92 Station Street Nunawading VIC 3131.  
Ph. +61 3 8878 1111

Except for any defects caused by an accident, misuse, abuse, improper installation or operation, lack of reasonable care, or normal wear and tear, we warrant that this product will be free from defects in workmanship and materials for a period of 2 years from the date of purchase. Defects that occur under normal use and care will be repaired, replaced, or refunded at our discretion. Your rights under this warranty are in addition to any other rights you have under the Australian Consumer Law or other applicable laws.

Our goods come with guarantees that cannot be excluded under the Australian Consumer Law. You are entitled to a replacement or refund for a major failure and for compensation for any other reasonably foreseeable loss or damage.

You are entitled to have the goods repaired or replaced if the goods fail to be of acceptable quality and the failure does not amount to a major failure.

To claim under this warranty, you can:

- a) Send the product (with proof of purchase) at your cost to the place of purchase where the claim will be assessed. If your warranty claim is accepted, we will, at our discretion, repair or replace the product, or refund you the purchase price and retain the product.
- b) Contact the Vyking Force customer team via email on [support@vykingforce.com](mailto:support@vykingforce.com) with a copy of the receipt, an explanation of the problem and any photos. If your warranty claim is accepted, we will, at our discretion, repair or replace the product, or refund you the purchase price and pick up the product.

PRESSURE WASHER 1450B

---



Automotive Brands Group Pty Ltd.  
76-92 Station St  
Nunawading VIC 3131

VykingForce is a registered trademark of the Automotive  
Brands Group Pty Ltd.

[VYKINGFORCE.COM](http://VYKINGFORCE.COM)